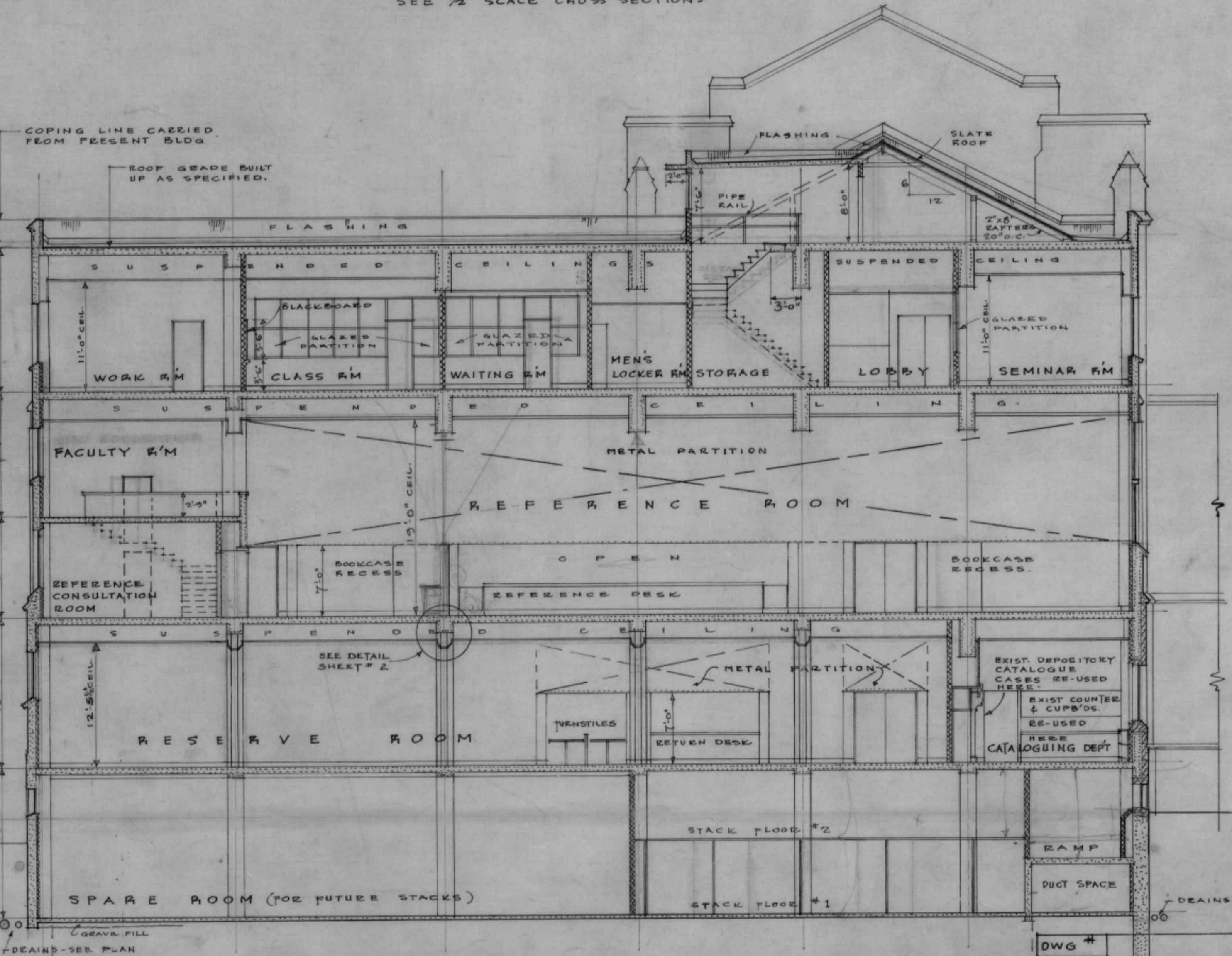
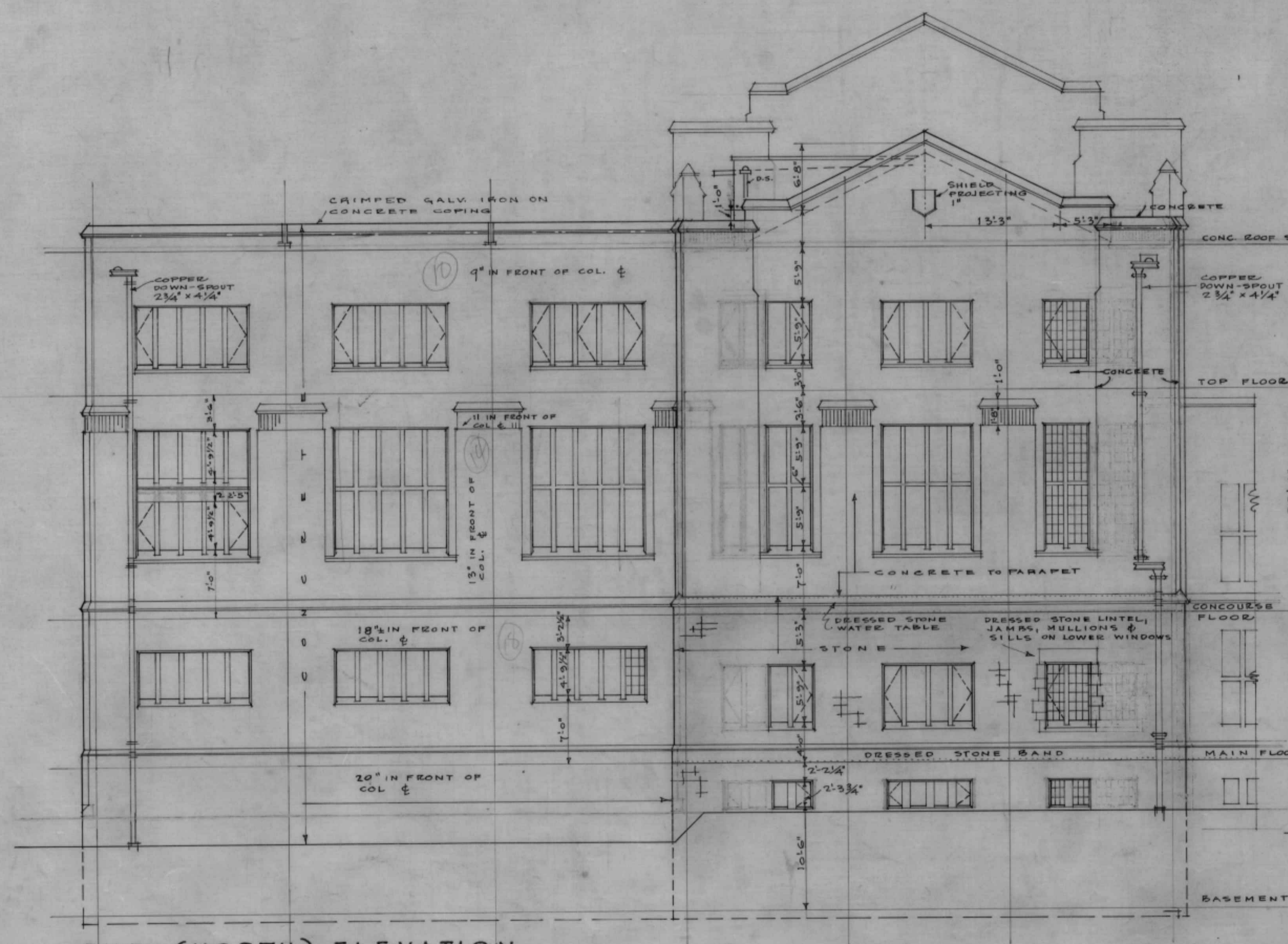


FRONT (WEST) ELEVATION.

CROSS SECTION THRO' STACKS
SEE 1/2" SCALE CROSS SECTIONS



END (NORTH) ELEVATION.

CROSS SECTION

LIBRARY - BUILDING 9
 SCALE - 1/8" = 1'-0"
 DATE - JULY 29/46
 ARCHITECTS - VANCOUVER, B.C.
 UNIVERSITY OF BRITISH COLUMBIA

- LEGEND**
- CONCRETE
 - STONE
 - HOLLOW TILE
 - EXISTING BUILDING

REVISIONS CORR'D TO

DWG #